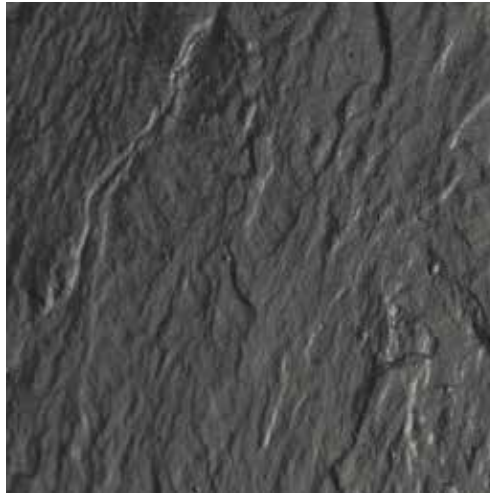


Decor summary



SCHNEPEL
Timeless German Quality.

Genuine slate



H

Genuine slate

Availability

Available for Schnepel S1, X-Linie and ELF-Linie

Surface structure

Natural slate structure

General information

Our genuine slate is real stone veneer from fissile shale. It is split of large stone slabs with a thickness of 0.1 - 2.0 mm. Polyester resin and glass fibers on the back of the veneer keep layers together firmly. Then the stone veneer is glued on and pressed with wood particleboard. The gap-rough surface and the changing colors in each layer make each sheet unique. Variations in color and texture are normal due to the uniqueness of the natural product and wanted. For this reason, the above illustration, and the product samples be indicative only.

Cleaning and maintenance recommendation

Although our slate surface is made of real stone, liquids, which strike the surface, can enter into the stone and cause stains. Even large heat effects, e.g. by hot dishes, can cause changes or damage to the material. Therefore, you should always use a protective pad, if you put something on the surface.

Our slate surfaces are treated with natural wax to protect. However, dirt or stains should be removed promptly as possible. It should be used a soft, slightly damp cloth, as possible without the addition of household cleaning products. You should avoid on detergent with abrasive and highly acidic or alkaline components, because this can lead to scratches or the degree of gloss. The cleaned surface then wipe dry with a clean, dry cloth.

The rough stone surface can be protected with all standard wood finishes. Though the wood lacquers can change the color of the stone surface so that the natural and lively surface can be visually impaired. To refresh the material, we recommend the rubbing with a colorless natural wax. Also, this may lead to a slight darkening of the surface.

Concrete look



B

Concrete look

Availability

Available for Schnepel S1, X-Linie and ELF-Linie

Surface structure

Similar to real concrete

General information

For our furniture in concrete look we use composite plates. These are made of MDF boards, which are coated with a 1-2 mm thick, special mineral surface with natural marble sand. The boards look like concrete, and also feel like that.

Cleaning and maintenance recommendation

Our concrete look surface is very robust, because it is sealed with a special matte lacquer. Nevertheless, liquids, which are hitting the surfaces, can penetrate into the material and cause stains. Also, drinking glasses or vases can leave margins on the surface. Therefore, you should put something between decoration and surface for the better protection of your equipment. Dirt or stains should be removed promptly as possible. This should include a soft, slightly damp cloth, as possible without the addition of household cleaning products. You should avoid on detergent with abrasive and highly acidic or alkaline component, because this can lead to scratches or change the degree of gloss. The cleaned surface then wipe dry with a clean, dry cloth. The mineral coating is very flexible, nevertheless collisions with hard objects can cause spalling of the material.

Real Oak



E

Real oak

Availability

Available for all Schnepel S1, X-Linie and ELF-Linie

Surface structure

Real oak (massive): nature wood structure

General information

For our real wood furnitures, we only use solid wood panels with finger joined glued laminated timber. Solid wood is a material which adapts the indoor climate conditions and can absorb and release moisture. Therefore you should ensure a balanced room climate and a relative humidity of 45-50%. If the solid wood is constantly exposed to high humidity, the board tends to warp.

The surface is repeatedly smoothed and are primed with a wax to protect and seal them.

Cleaning and maintenance recommendation

Solid wood is extremely easy to handle, antistatic and therefore it attracts no dust. Cleaning should preferably be made with a dry cloth. Depending on the stress, the surface should be re-waxed periodically at certain time intervals, so that the surface keeps its silky shine and the protection is maintained. A suitable care wax is available in specialized trade.

Standing moisture and longer influence of water (wet sponge, plates, cups, etc.) should be avoided and must be removed immediately. The formation of water spots makes a re-waxing immediately necessary.

Do not use harsh or abrasive cleaners. A thorough cleaning can be done with mineral turpentine. Do not forget to dry the surface after using turpentine. If you want to grind down the surface due to heavy soiling, please grind with fine sandpaper (No. 220) in the direction of wood grain. After that the wood should be treated with a suitable furniture wax.

Oak, antique



K Oak, antique

Availability

Available for all Schnepel S1, X-Linie and ELF-Linie

Surface structure

Oak, antique (veneer): nature with knotholes

General information

Oak antique has a 0,6mm thick veneer with knotholes, these emphasises the authenticity of the wood. The greyish change of colour is due to a complex production process where the wood is exposed to heat and pressure. Also slight colour discontinuities are visible from trunk to trunk. The surface is repeatedly smoothed and are primed with a wax to protect and seal them.

Cleaning and maintenance recommendation

Solid wood is extremely easy to handle, antistatic and therefore it attracts no dust. Cleaning should preferably be made with a dry cloth. Depending on the stress, the surface should be re-waxed periodically at certain time intervals, so that the surface keeps its silky shine and the protection is maintained. A suitable care wax is available in specialized trade.

Standing moisture and longer influence of water (wet sponge, plates, cups, etc.) should be avoided and must be removed immediately. The formation of water spots makes a re-waxed immediately necessary.

Do not use harsh or abrasive cleaners. A thorough cleaning can be done with mineral turpentine. Do not forget to dry the surface after using turpentine. If you want to grind down the surface due to heavy soiling, please grind with fine sandpaper (No. 220) in the direction of wood grain. After that the wood should be treated with a suitable furniture wax.

Pasadena



P

Pasadena (chopped)

Availability

Available for Schnepel S1, X-Line, and ELF-Line

Surface structure

Chopped, with deep, irregular structure

General information

For our furniture in Pasadena, we use 3-layer plates. These are made of solid wood panels, which are coated with a spruce veneer. A special process simulates on new wood the look of naturally weathered, aged wood from a sun-drenched climate. The surface is irregular with subtle dents and color variations – hewn for a beautifully natural feel. .

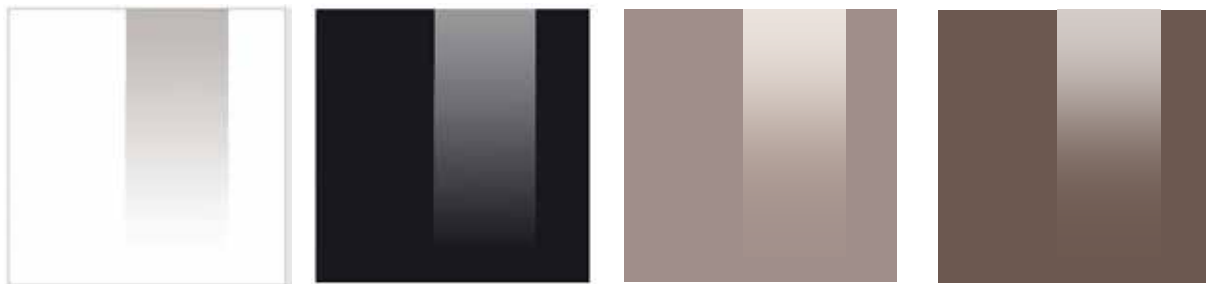
Please note, that the decor is chopped. It has a very rough surface with deep scratches and dents that enhance the wood-look on. These irregularities are required and therefore no reason for a complaint!

Cleaning and maintenance recommendation

Our Pasadena is very robust, because it is a real wood veneer. The cleaning with conventional cleaning products (window cleaner, vinegar cleaner, ...) do not change the color or coating. Prerequisite for this is simple wiping, Don not chafe! Dirt or stains should be removed promptly as possible. You should avoid on detergent with abrasive and highly acidic or alkaline components. Then the cleaned surface can be wiped dry with a plain, clean, dry cloth, that don't fuzzes. Softer and rougher clothes may occasionally wear away parts of the surface, because it is very irregular. Do use only smooth cloths!

The coating is flexible, nevertheless collisions with hard objects can cause spalling of the material..

High-gloss decors



W

White high-gloss

S

Black high-gloss

C

Cuba Libre

U

Umbra high-gloss

Availability

Available for all Schnepel S1 models, X-Line and ELF-Line

Surface structure

High-gloss

General information

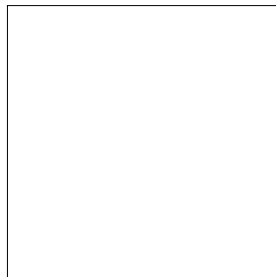
For our high-gloss decors we only use laminated chipboard with HPL coating. The production of such coatings is done by „caking“ of thin layers of melamine resin with printed decorative paper. By heating the paper is penetrated by the resin and connects after cooling to a waterproof, scratch-resistant material. The glueing of decorative HPL gives a robust, easy-to-clean surface in the desired color / structure.

Cleaning and maintenance recommendation

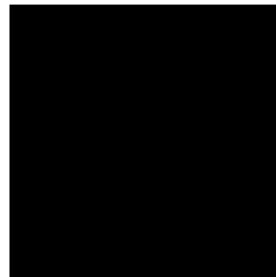
Important when cleaning high-quality surfaces like our glossy structure is, that you use first of all hot water with commercial detergent. All purpose cleaner is used alternatively, but without abrasive particles. After rinsing with clean water, the surface should be wiped dry. In observance of these instructions the structure remains perfectly clean.

If oil stains cannot be removed residue-free, it is due to long exposure of the soiling. In this case you should avoid necessarily detergents that contain abrasives. The fine structure may be damaged beyond repair. In such cases, a kind of basic cleaning with a special cleaner should be done, but respecting the safety and operating instructions. After that please clean the surface as described above.

Uni decors



Matt-Weiß



Matt-Schwarz

Verfügbarkeit

Matt-Weiß und Matt-Schwarz: Innenausstattung aller S1 Modelle, Einlegeböden für alle Möbel. Auch für Sonderanfertigungen geeignet

Struktur

Matte Perlstruktur (Matt-Weiß, Matt Schwarz)

Generelle Information

Für die Dekore Matt-Weiß und Matt-Schwarz verwenden wir ausschließlich direkt beschichtete Holzspanplatten vom Typ P2 mit Melaminharzbeschichtung.

Die Herstellung solcher Beschichtungen erfolgt durch »Verbacken« von dünnen Melaminharz-Schichten mit bedrucktem Dekorpapier. Durch die Erhitzung wird das Papier vom Harz durchdrungen und verbindet sich nach dem Abkühlen zu einem wasserdichten, kratzfesten Material. Das Aufleimen von HPL Dekor auf einen Plattenwerkstoff verleiht diesem eine robuste, leicht zu reinigende Oberfläche in gewünschter Farbe / Struktur.

Reinigungs- und Pflegeempfehlung

Grundsätzlich können, wie bei anderen Kunststoffoberflächen auch, normale Schmutzrückstände problemlos beseitigt werden. Wichtig dabei ist, dass zur Reinigung immer ein weiches feuchtes Tuch verwendet werden sollte. Es sollten dabei auf keinen Fall scharfe Scheuermittel/-pulver, Stahlwolle, Poliermittel, Waschmittel, Möbelputzmittel, Bleichmittel, Reinigungsmittel mit starken Säuren und Dampfreinigungsgeräte verwendet werden. Denn sowohl diese, als auch zu raue Tücher oder Putzschwämme mit rauen Seiten erzeugen bei zu intensivem Reiben oder Scheuern auf der Oberfläche Glanzspuren bzw. Aufglänzungen, die eine Beschädigung der Oberfläche bedeuten und sich nicht mehr beseitigen lassen.

Fett-Rückstände sollten ebenfalls innerhalb kürzester Zeit, spätestens nach 48 Stunden, beseitigt werden, da eine zu lange Einwirkzeit auch zu einer Beschädigung der Oberfläche führen kann.

Wood reproductions



I

Eiche sägerau



N

Nussbaum Montana

Verfügbarkeit

Eiche sägerau und Nussbaum Montana: Verfügbar für alle S1-Modelle, die X-Linie und die ELF-Linie

Struktur

Authentic (Eiche sägerau, Nussbaum Montana)

Generelle Information

Für die Dekore Eiche sägerau und Nussbaum Montana verwenden wir ausschließlich direkt beschichtete Holzspanplatten vom Typ P2 mit Melaminharzbeschichtung.

Die Herstellung solcher Beschichtungen erfolgt durch »Verbacken« von dünnen Melaminharz-Schichten mit bedrucktem Dekorpapier. Durch die Erhitzung wird das Papier vom Harz durchdrungen und verbindet sich nach dem Abkühlen zu einem wasserdichten, kratzfesten Material. Das Aufleimen von HPL Dekor auf einen Plattenwerkstoff verleiht diesem eine robuste, leicht zu reinigende Oberfläche in gewünschter Farbe / Struktur.

Reinigungs- und Pflegeempfehlung

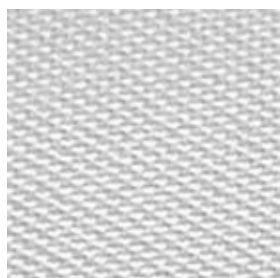
Bei Oberflächen mit Authentik-Oberfläche handelt es sich um eine naturnahe Version der Optik. Sie zeichnet sich besonders durch einen einzigartigen Glanz-Matt-Effekt aus: Die daraus resultierende Bewegung ist nicht nur sicht-, sondern auch spürbar. Dadurch erhält die Oberfläche den Charakter ihres Vorbildes, der massiven Holzoberfläche in geölter oder matt lackierter Ausführung.

Ähnlich wie z. B. bei Hochglanz-Oberflächen oder auch den Oberflächen bei Massivhölzern ist bei dem Gebrauch bzw. bei der Pflege unserer matten Oberflächen einiges zu beachten:

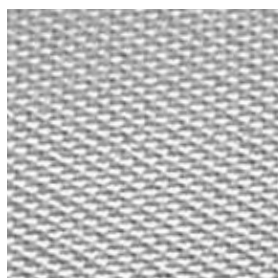
Grundsätzlich können, wie bei anderen Kunststoffoberflächen auch, normale Schmutzrückstände problemlos beseitigt werden. Wichtig dabei ist, dass zur Reinigung immer ein weiches feuchtes Tuch verwendet werden sollte. Es sollten dabei auf keinen Fall scharfe Scheuermittel/-pulver, Stahlwolle, Poliermittel, Waschmittel, Möbelputzmittel, Bleichmittel, Reinigungsmittel mit starken Säuren und Dampfreinigungsgeräte verwendet werden. Denn sowohl diese, als auch zu raue Tücher oder Putzschwämme mit rauen Seiten erzeugen bei zu intensivem Reiben oder Scheuern auf der Oberfläche Glanzspuren bzw. Aufglänzungen, die eine Beschädigung der Oberfläche bedeuten und sich nicht mehr beseitigen lassen.

Fett-Rückstände sollten ebenfalls innerhalb kürzester Zeit, spätestens nach 48 Stunden, beseitigt werden, da eine zu lange Einwirkzeit auch zu einer Beschädigung der Oberfläche führen kann.

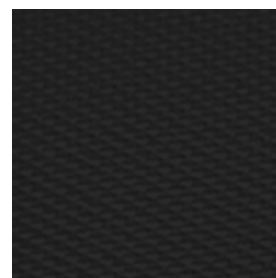
Acoustic fabrics



White



Silvergrey



Black

Availability

Available for the top front of all Schnepel S1 models

Available for the complete front of all Schnepel S1 models

General information

The used acoustic fabrics are produced in Germany. This applies to the manufacturing process and also to the dyeing process.

Cleaning and maintenance recommendation

The softest way to clean our acoustic fabric for low-soil levels is to wipe with warm water and with a clean cloth. Depending on durability of the stain it is recommended to put some detergent or neutral soap into the water.

Please take particular care when cleaning the light fabrics. Use a white cloth, a coloured one could transfer stains to the fabrics. An upholstery cleaning is helpful for stubborn stains. In general all detergents for fabrics that can't be washed in a washing machine can be used.

If there are loudspeakers placed behind the acoustic fabric the house dust will be filtered through the fabric by air circulation. Therefore it is possible that after some time visible edges will be shown particularly by the light fabrics. However these loose dust accumulations can be removed carefully with a vacuum cleaner. Please make absolutely sure that the vacuum cleaner is tidy, to avoid transferring additional stains on the fabrics.

Samples

Black

Silvergrey

White

Decor summary



SCHNEPEL
Timeless German Quality.